



"Your Safest Solution"



WHY CHOOSE OUR FAMILY

CEC is a dynamic industrial construction and crane company **providing services in BC, Alberta, and Yukon. CEC is local to Kamloops and Prince George**, whose owners have 45 years of combined expertise. CEC's commitment to productivity, social responsibility, and cutting-edge technology ensures client satisfaction and peace of mind. As a rapidly growing firm, CEC consistently sets and elevates industry standards through its Four Pillars: ***INTEGRITY, CULTURE, QUALITY, SAFETY***

Mission

"Building a World Worth Building For." We are committed to our family, community and industry. CEC prides itself on providing local diverse employment opportunities while working in close collaboration with our partners. We believe our impact is more than just the physical work we do; we are creating a better future.

Vision

Our vision is to be ***"The best family in the business."*** At CEC, we are more than colleagues, we are family. With our core values - teamwork, trust, and respect, we create a space for individuals to thrive and reach their full potential. This vision drives us to provide exceptional service to our valued customers.

"Building a World Worth Building for"



SERVICES



Mobile Cranes

Unlock project efficiency with our versatile fleet of crawler and mobile cranes, ranging from 5 to 770 tons, tailored for your needs.



Pile Driving

Experienced crews in the installation of driven piles with diesel, hydraulic, and vibratory hammers: Sheet piles, pipe piles, H-piles, wood piles, and concrete piles. Installation of helical/screw piles up to 24" in diameter with 225,000ft. lb of torque.



Bridges

Whether you need a new build or a bridge that requires rehabilitation, CEC has what you need, including girder erection, bridge launch, structural steel erection, jacking, demolition, bearing changes, rip rap, etc.



Shoring & Cofferdams

Shoring and cofferdam requirements come in many sizes and shapes for various reasons, we have an innovative solution for everyone including sheet piles, H-pile and lagging.



Cast-in-place Concrete

We provide concrete solutions for all concrete needs. Including formwork, cast-in-place pouring, finishing, and repairs for bridge decks, joints, abutments, pile caps, culverts, and any related concrete.



Welding & Fabrication

Our in-house CWB team delivers innovative, 'outside-the-box' project solutions with full support across the fabrication process. We also have mobile welders for all on-site structural welding requirements.



Industrial Construction

From mines to railways, tunnels, and more, trust CEC experts for comprehensive industrial construction solutions.



Jack & Roll

Trust our skilled Jack and Roll operators for a hassle-free experience in any project size. We ensure smooth operations, covering every space with confidence.



General Contracting

Our collaborative approach spans far and wide, delivering top-tier construction and expansive projects locally and across British Columbia, Alberta, and the Yukon.



Four Pillars of CEC

Integrity

Culture

Quality

Safety

INTEGRITY is at the core of our business, ensuring transparent, honest, and ethical practices that distinguish us in delivering trust and value to our clients. We do the job right regardless of who is looking or what the situation is.

CEC fosters a positive and diverse company **CULTURE**, resulting in a dedicated and skilled workforce that's committed to project success.

QUALITY is ingrained in every aspect of CEC. This guarantees that we meet or exceed industry standards in everything we do.

CEC prioritizes **SAFETY** above all else. We manage and mitigate risks to ensure everybody goes home safely at the end of the day.

The 2024 Liebherr LTM 1650-8.1

Mobile and Crawler Cranes

CEC's Flagship - 770ton



770 t



54 m (177')



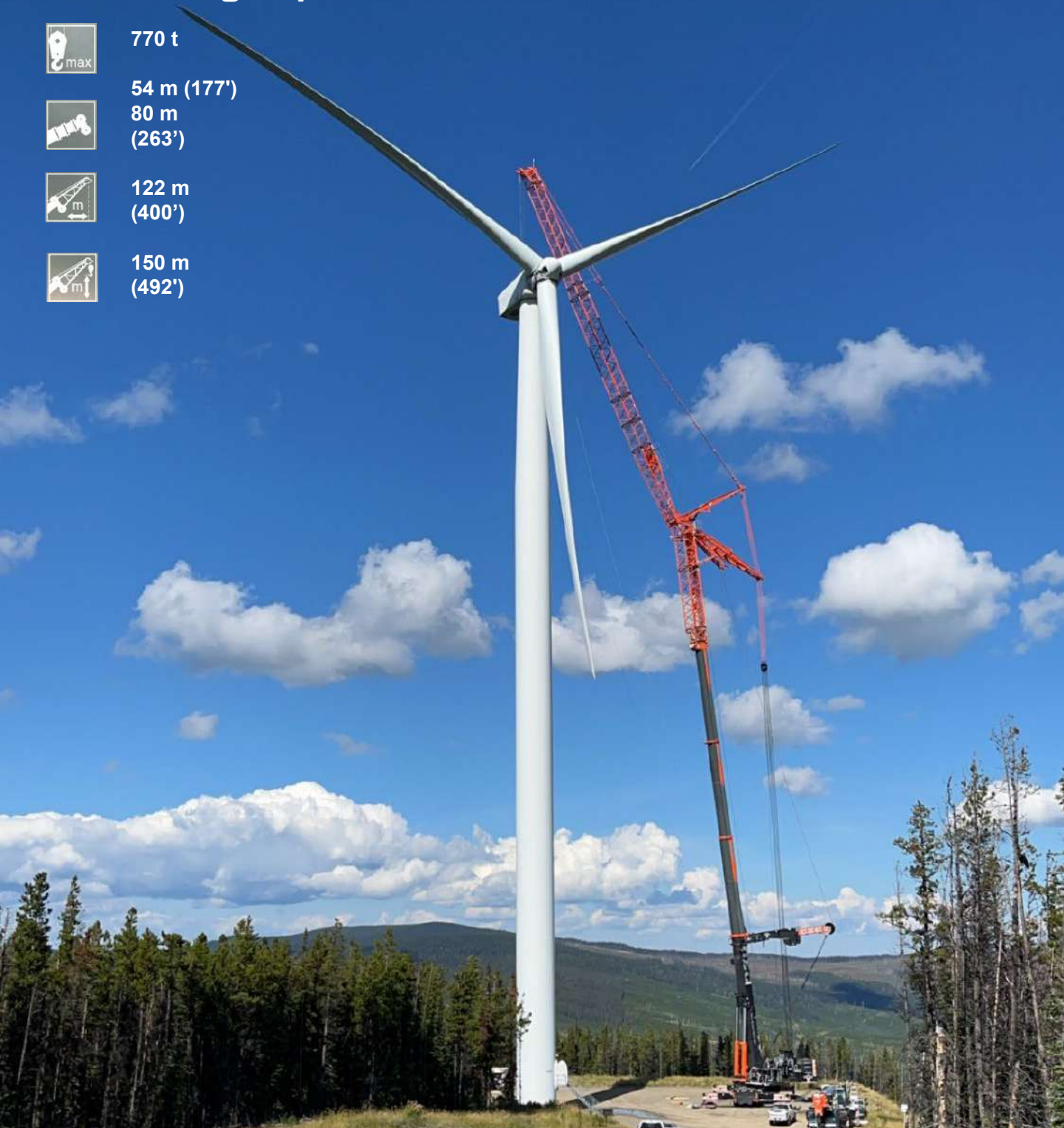
80 m
(263')



122 m
(400')



150 m
(492')



CEC is announcing a massive addition to our crane fleet! Our brand new Liebherr LTM 1650-8.1 has arrived. Engineered to be easily transported on the roads in Western Canada, this beast knocks out the previous largest crane in its class (in BC) by over 30%. By integrating this innovative equipment into our operations, we are set to increase our efficiency and lifting capacity significantly. The LTM 1650-8.1 is a versatile asset, allowing us to undertake a wider array of projects with ease.



Discover our Newest, and largest Crane – the largest road-legal crane in BC!

OWNED EQUIPMENT

All-Terrain Mobile Cranes

- 770-ton All Terrain Crane
- 3 X 300-ton All Terrain Crane
- 2 X 250-ton All Terrain Cranes
- 200-ton All Terrain Crane
- 2 X 135-ton All Terrain Crane
- 110-ton All Terrain Crane
- 100-ton All Terrain Crane

Rough Terrain Cranes

- 160-ton RT Crane
- 130-ton RT Crane
- 100-ton RT Cranes
- 75-ton RT Crane

Crawler Cranes

- 275-ton Lattice Crawler Crane
- 4 X 110-ton Lattice Crawler Cranes
- 5 Ton Crawler Crane

Boom Trucks & Carry Decks

- 50-ton Boom Truck
- 35-ton 6WD Boom Truck
- 30-ton Boom Truck
- 22-ton Boom Truck
- 15-ton Carry Deck
- 2 x 9-ton Carry Deck

Heavy Equipment & Piling Equipment

- MKT V5B Vibratory Hammer
- ICE 44B Vibratory Hammer
- APE 200-6 Vibratory Hammer
- ICE I-62 Diesel Hammer
- Multiple Drop Hammers/Piling Leads
- 35-ton Excavators
- 225,000ft. lb Eskridge screw pile head
- Gilbert Grizzly MG90 side grip
- CAT MP 318 Shear
- 3-yard clam bucket



Piling – Foundations/Shoring



Installation of sheet piles:

- Cofferdams – for various uses, including HDD/Pipe Ramming
- Shoring/Retaining walls

Installation of driven piles

- Pipe piles (open/close-ended)
- H-piles
- Wood piles
- Concrete piles

Installation of screw piles

- Installation of helical screw piles up to 24" in diameter
- Rotary drive head with 225,000 ft. lbs. of torque.



Bridge



- Girder erection
- Structural steel erection
- Installation of precast concrete, cast-in-place abutment/wing walls and piling/foundations
- Repair and remediation
- Bridge launching
- Demolition
- Jacking
- Assist in design
- Bearing installation/changing
- Rip rap and diversions
- Consulting and execution



CWB Fabrication



- CWB-certified welding shop
- Our design team can solve your problems and will facilitate your shop drawing needs
- Mobile welding rigs
- Pile splicing and site welding
- Fabrication of the following, but not limited to:

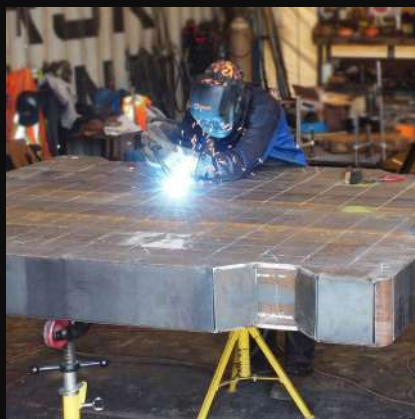
Falsework

Spreader bars and specialty rigging devices

Custom equipment

Bridge structures

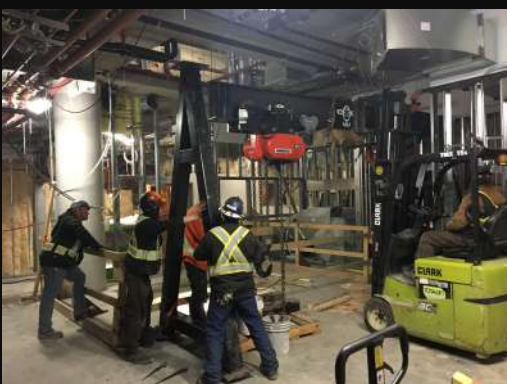
Railings and posts



Jacking / Jack and Roll



- Jack and roll large equipment
- Moving equipment in low headroom or
- difficult-to-maneuver locations such as:
- Buildings
- Powerhouses
- Substations
- Hospitals
- Mines
- Jacking power 20 - 1000 tons
- 10 x 100ton aluminum body locking ring jacks.
- 4 x 100ton aluminum hollow core jacks with 100mm stroke.
- Hydraulic power packs
- Tees, posi checks
- Hy torques, 30/50ton pancakes
- Custom jacking towers and jacking plans



Cast-in-place Concrete



- Cast-in-place for new structures
- Concrete repairs
- Formwork
- Cast-in-place pouring and finishing
- Repairs for bridge decks
- Joints, abutments
- pile caps
- Culverts and more



QUALIFICATIONS

Red Seal Mobile Crane Operators

Certified Pile Drivers & Bridgeworks

Red Seal & CWB Welders

Red Seal Ironworkers

Heavy Equipment Operators

CWB Welding Supervisors

Red Seal Heavy Duty Mechanics

Red Seal Millwrights



Kamloops (Main office): 250-319-0838
8125 Dallas Drive, Kamloops BC V2C 6X2

Prince George: 250-617-6061
5955 Otway RD, Prince George BC V2M 7B4



"Your Safest Solution"



*We're thrilled to assist you with our expertise.
Let's achieve success together!*

