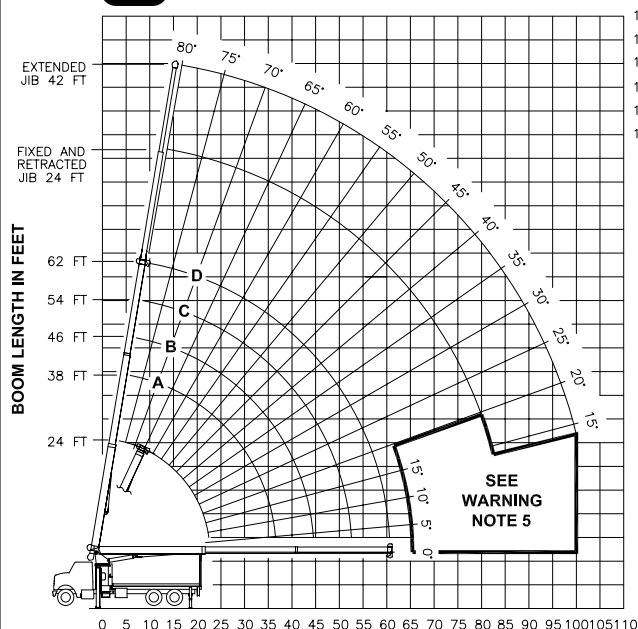




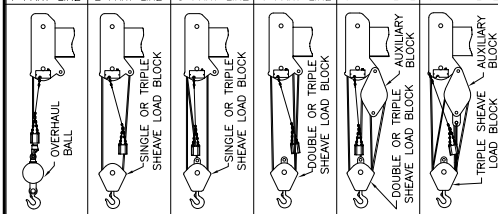
RANGE DIAGRAM



OPERATING RADIUS FROM CENTERLINE OF ROTATION IN FEET

ALLOWABLE LINE PULL

1 PART LINE 2 PART LINE 3 PART LINE 4 PART LINE 5 PART LINE 6 PART LINE



8500 LBS	17000 LBS	25500 LBS	34000 LBS	42500 LBS	44000 LBS
7400 LBS	14800 LBS	22200 LBS	29600 LBS	37000 LBS	44000 LBS

DEDUCTIONS FROM RATED LOADS FOR LOAD HANDLING DEVICES SUPPLIED BY MANITEX

AUXILIARY BLOCK ——— 50 LBS

OVERHAUL BALL ——— SEE OVERHAUL BALL MFR NAMEPLATE

LOAD BLOCK ——— SEE BLOCK MFR NAMEPLATE

HOSE REEL ——— 160 LBS

SWING AROUND JIB ——— SEE LOAD CHART

WARNING

LIFTING OFF THE MAIN BOOM POINT WHILE THE SWING AROUND JIB IS ERRECTED IS NOT INTENDED OR APPROVED.

WARNING

ANTI-TWO-BLOCK SYSTEM MUST BE IN GOOD OPERATING CONDITION BEFORE OPERATING CRANE. REFER TO OWNER'S MANUAL.

KEEP AT LEAST 3 WRAPS OF LOAD LINE ON DRUM AT ALL TIMES.

9/16" - 6X25 IWRC (3.5:1 S.F.)
29750 LBS. BREAKING STRENGTH
9/16" ROT RESISTANT (5.0:1 S.F.)
37000 LBS. BREAKING STRENGTH

LOAD RATINGS IN LBS WITH OUTRIGGERS AND STABILIZERS EXTENDED

OPERATING RADIUS FEET	BOOM ANGLE DEGREES	BOOM LENGTH AND MARKER			
		24 FT	38 FT	46 FT	54 FT
5	77	44000			
8	70	31020			
10	64	26230	75	22930	78
12	59	22780	72	20820	75
14	53	20120	68	18370	73
17	43	16950	63	15640	69
20	30	14090	58	13630	65
25			48	11140	57
30			37	9180	49
35			19	7000	40
40				28	5260
45				33	4600
50				20	3640
55					27
60					14
65					
70					
75					
80					
85					
90					
95					
100					

580 LBS. 370 LBS. 310 LBS. 260 LBS. 230 LBS. DEDUCTIONS FOR STOWED JIB

WARNING

1. THE OPERATOR MUST READ AND UNDERSTAND THE OWNER'S MANUAL BEFORE OPERATING THIS CRANE.
2. POSITIONING OR OPERATION OF CRANE BEYOND AREAS SHOWN ON THIS CHART IS NOT INTENDED OR APPROVED EXCEPT WHERE SPECIFIED IN OWNER'S MANUAL.
3. LOADED BOOM ANGLES AT SPECIFIED BOOM LENGTHS GIVE ONLY AN APPROXIMATION OF THE OPERATING RADIUS. THE BOOM ANGLE BEFORE LOADING SHOULD BE GREATER TO ACCOUNT FOR DEFLECTIONS. DO NOT EXCEED THE OPERATING RADIUS FOR RATED LOADS.
4. THE OPERATING RADIUS SHOWN IN THE JIB RATING CHART IS FOR FULLY EXTENDED BOOM ONLY. WHEN BOOM IS NOT FULLY EXTENDED, USE ONLY LOADED BOOM ANGLE TO DETERMINE LOAD RATING OF JIB. DO NOT RELY ON CAPACITY ALERT SYSTEM WHEN LIFTING FROM JIB.
5. BOOM MUST BE FULLY RETRACTED WHEN JIB IS ERRECTED, BEFORE LOWERING BOOM THRU THIS AREA.
6. FOR BOOM ANGLES NOT SHOWN ON JIB LOAD RATING CHART, USE RATING OF NEXT LOWER BOOM ANGLE.
7. FOR BOOM LENGTHS NOT SHOWN, USE RATING OF NEXT LONGER BOOM LENGTH. FOR RADI NOT SHOWN, USE RATING OF NEXT LONGER RADIUS.
8. CRANE LOAD RATINGS ON OUTRIGGERS ARE BASED ON FREELY SUSPENDED LOADS WITH THE MACHINE LEVELED AND STANDING ON A FIRM UNIFORM SUPPORTING SURFACE. NO ATTEMPT SHALL BE MADE TO MOVE A LOAD HORIZONTALLY ON THE GROUND IN ANY DIRECTION.
9. PRACTICAL WORKING LOADS DEPEND ON SUPPORTING SURFACE, WIND, AND OTHER FACTORS AFFECTING STABILITY SUCH AS HAZARDOUS SURROUNDINGS, EXPERIENCE OF PERSONNEL, AND PROPER HANDLING, ALL OF WHICH MUST BE TAKEN INTO ACCOUNT BY THE OPERATOR.
10. THE MAXIMUM LOAD WHICH MAY BE TELESKOPED IS LIMITED BY HYDRAULIC PRESSURE, BOOM ANGLE, AND BOOM LUBRICATION. IT IS SAFE TO ATTEMPT TO TELESCOPE ANY LOAD WITHIN THE LIMITS OF THE LOAD RATING CHART.

INFORMATION

1. DEDUCTIONS MUST BE MADE FROM RATED LOADS FOR STOWED JIB, OPTIONAL ATTACHMENTS, HOOKS, AND LOAD-BLOCKS (SEE DEDUCTION CHART). WEIGHTS OF SLINGS AND ALL OTHER LOAD HANDLING DEVICES SHALL BE CONSIDERED A PART OF THE LOAD.
2. CRANE LOAD RATINGS WITH OUTRIGGERS ARE BASED ON OUTRIGGERS AND STABILIZERS EXTENDED AND SET WITH MACHINE LEVELED.
3. LOAD RATINGS ABOVE THE HEAVY LINE ARE STRUCTURALLY LIMITED CAPACITIES. LOAD RATINGS BELOW THE HEAVY LINE ARE STABILITY LIMITED CAPACITIES AND DO NOT EXCEED 85% OF TIPPING.

DEFINITIONS

1. OPERATING RADIUS IS THE HORIZONTAL DISTANCE FROM THE AXIS OF ROTATION TO THE CENTER OF THE VERTICAL HOIST LINE OR TACKLE WITH LOAD APPLIED.
2. LOADED BOOM ANGLE AS SHOWN IN THE COLUMN HEADED BY \angle IS THE INCLUDED ANGLE BETWEEN THE HORIZONTAL AND LONGITUDINAL AXES OF THE BOOM BASE AFTER LIFTING RATED LOAD AT RATED RADIUS.

Manitex

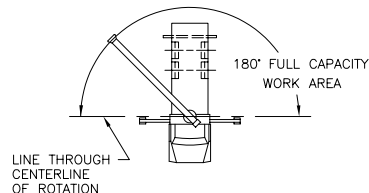
MODELS
2262C & 2262T

CRANE MEETS ANSI B30.5 REQUIREMENTS

7300087-002 NR

JIB LOAD RATINGS WITH OUTRIGGERS AND STABILIZERS EXTENDED

OPERATING RADIUS FEET	BOOM ANGLE DEGREES	24 FT JIB FOR ALL BOOM LENGTHS SEE WARNING NOTE 4		42 FT JIB FOR ALL BOOM LENGTHS SEE WARNING NOTE 4	
		RATED LOAD IN POUNDS	RATED LOAD IN POUNDS	RATED LOAD IN POUNDS	RATED LOAD IN POUNDS
10					
12					
14					
17	80	7240			
20	78	6600			
25	75	5670	78	4080	
30	71	4920	75	3660	
35	68	4320	72	3310	
40	64	3820	69	3000	
45	60	3380	66	2720	
50	56	2970	63	2470	
55	52	2620	60	2260	
60	47	2320	57	2080	
65	43	2060	54	1920	
70	37	1840	50	1760	
75	31	1590	46	1610	
80	22	1230	42	1480	
85			37	1340	
90			32	1210	
95			26	1070	
100			17	740	



AREA OF OPERATION